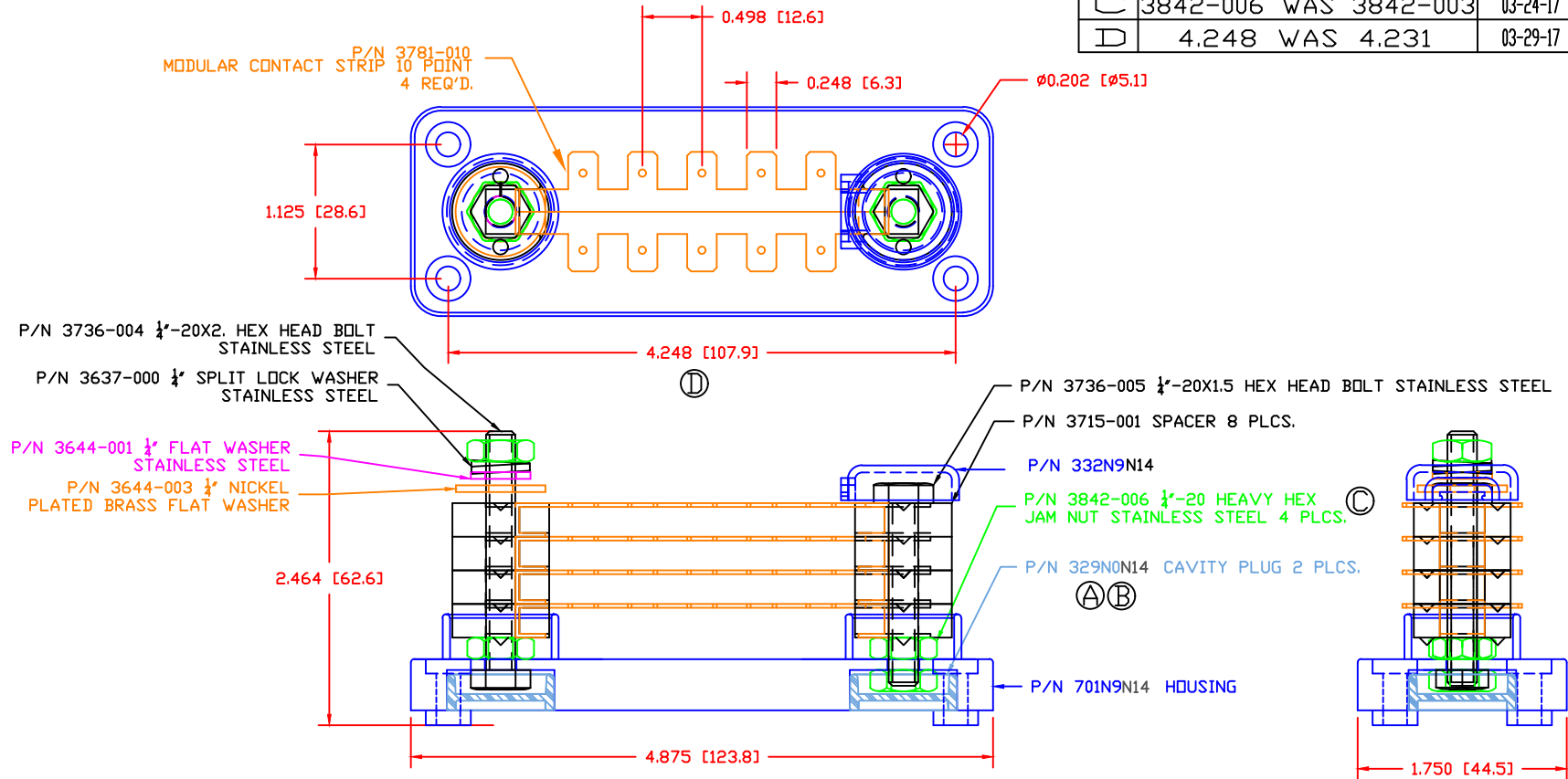


THE INFORMATION CONTAINED IN THIS DRAWING IS THE SOLE PROPERTY OF VTE INCORPORATED. ANY REPRODUCTION IN PART OR WHOLE WITHOUT THE WRITTEN PERMISSION OF VTE INCORPORATED IS PROHIBITED.

LTR.	REVISIONS	DATE	INT
A	PN 329NOV14 CHANGED TO PN 329NOV14	08-01-16	MDL
B	UPDATED CAP COLOR FROM 02	02-21-17	RAS
C	3842-006 WAS 3842-003	03-24-17	JMM
D	4.248 WAS 4.231	03-29-17	JMM




TOLERANCE UNLESS OTHERWISE SPECIFIED:
 MOLDED PRODUCTS ONLY: ±0.30"/±0.8mm
 HARDWARE ITEMS: ±0.010"/±0.25mm
 RADIAL DIAMETERS TO BE MEASURED OVER MANDRELS,
 RING GAGES OR PIN GAGES OF SUITABLE SIZE

MATERIAL PART NO:
 MATERIAL:
 VENDOR PART NO:
 SPECIFIC GRAVITY:
 MELTING TEMP:
 U.L. RATING:

111210514UL
 GLASS FILLED NYLON
 NYLON N2015 HL BK
 1.23
 515 F [268 C]
 UL 94 HB

MAXIMUM RECOMMENDED FASTENER TORQUE: 72 IN-LBS [8.14 Nm]

		VTE Incorporated 5437 Robinson Road, P.O. Box 790 Pellston, Michigan 49769 Telephone: 1-800-527-9256, 231-539-8000 FAX: 231-539-0914					
		REF:	DATE:	DRN BY:	RAS	WEIGHT:	
TTB SERIES		08-01-16		CHK'D BY:	RAS	SCALE:	NONE
TITLE:						BUSBAR, TAB TYPE 40 POINT	
MATERIAL:						PART NO.	
COLOR: BLACK		DRG CLASS		REV D		TTB740N14	