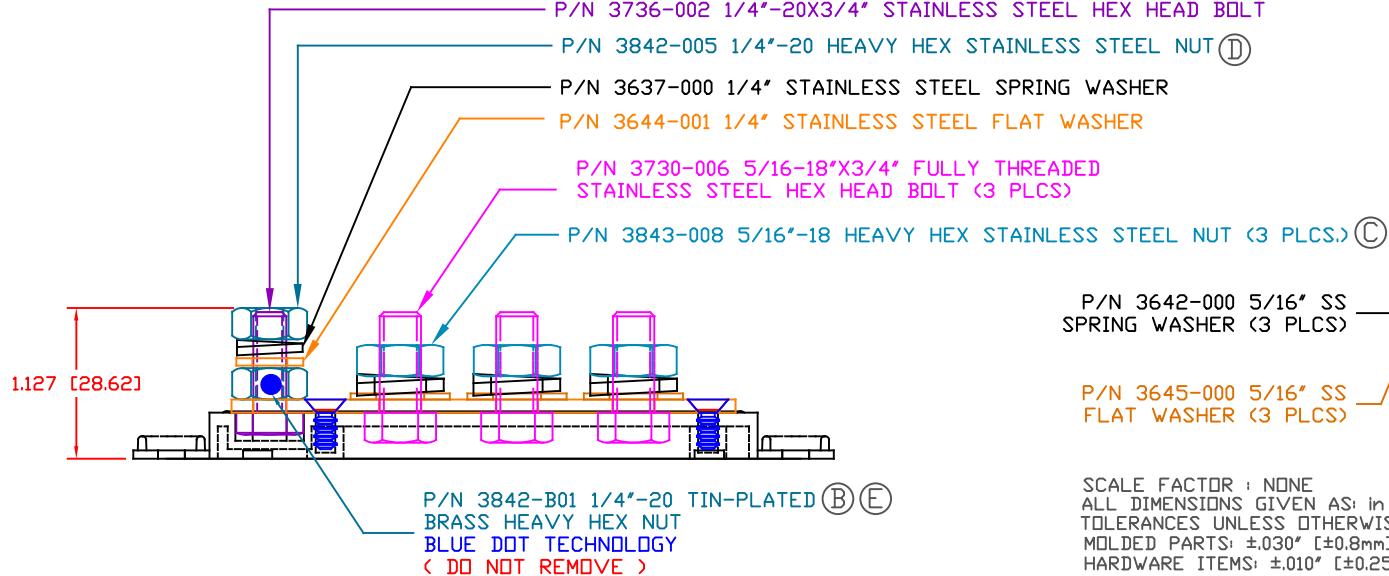
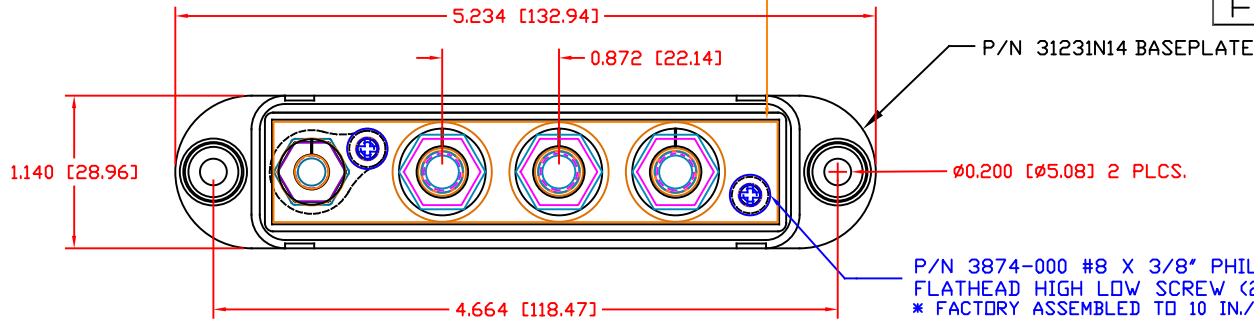


THE INFORMATION CONTAINED IN THIS DRAWING IS THE SOLE PROPERTY OF VTE INCORPORATED. ANY REPRODUCTION IN PART OR WHOLE WITHOUT THE WRITTEN PERMISSION OF VTE INCORPORATED IS PROHIBITED. VTE MAKES NO WARRANTY, EXPRESSED OR IMPLIED, AS TO THE SUITABILITY OF A PRODUCT FOR ANY INTENDED USE. THE CUSTOMER SHALL BEAR THE SOLE RESPONSIBILITY OF DETERMINING THE SUITABILITY OF ANY VTE PRODUCT FOR ITS END USE.

LTR.	REVISIONS	DATE	INT.
A	3874-000 WAS 3872-000	07-12-6	BRH
B	3842-001 WAS 3842-002	08-14-06	BRH
C	REPLACED P/N 3843-002 WITH P/N 3843-008	03-28-16	RAS
D	REPLACED P/N 3842-002 WITH P/N 3842-005	03-28-16	RAS
E	REPLACED P/N 3842-001 WITH P/N 3842-B01	06-14-17	JMM
F	ADDED FACTORY TORQUE SPEC TO 3874-000	05-23-24	RAS

P/N 3885-000 NICKEL PLATED BRASS ALLOY CONTACT PLATE



SCALE FACTOR : NONE  
ALL DIMENSIONS GIVEN AS: in [mm]  
TOLERANCES UNLESS OTHERWISE SPECIFIED :  
MOLDED PARTS: ±.030" [±0.8mm]  
HARDWARE ITEMS: ±.010" [±0.25mm]

MATERIAL PART NO:  
MATERIAL:  
VENDOR PART NO:  
SPECIFIC GRAVITY:  
MELTING TEMP:  
U.L. RATING:


1111210514UL  
GLASS FILLED NYLON  
NYLON N2015 HL BK  
1.23  
515 F [268 C]  
UL 94 HB

TORQUE:

1/4" NUT - MAXIMUM RECOMMENDED TORQUE: 60 IN./LBS. [6.7 Nm]  
5/16" NUT - MAXIMUM RECOMMENDED TORQUE: 144 IN./LBS. [16.2 Nm]

( ANTI-SEIZE RECOMMENDED )

INCLUDES P-16808110001 BLUE DOT MULTI LABEL, 1 PER CONTAINER  
MAXIMUM AMPERAGE: 210 AMPS @12VDC

		<b>VTE Incorporated</b> 5437 Robinson Road, P.O. Box 790 Pellston, Michigan 49769 Telephone: 1-800-527-9256, 231-539-8000 FAX: 231-539-0914			
		REF:	DATE:	DRN BY:	BRH
CUSTOMER DIMS	02-22-06	CHK'D BY:	BRH		
TITLE: 5/16" 4-POINT CONTACT PLATE				SCALE:	
MATERIAL: GLASS FILLED NYLON			PART NO.		
COLOR: BLACK	DRG CLASS	REV F	7705N0N14		