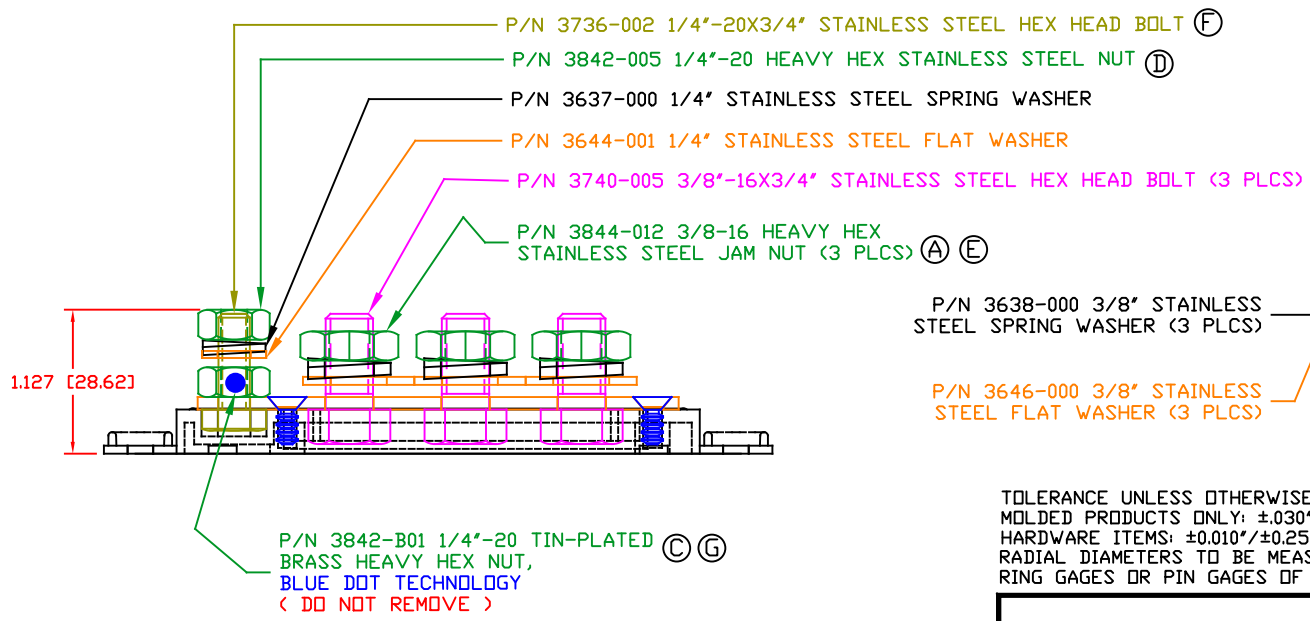
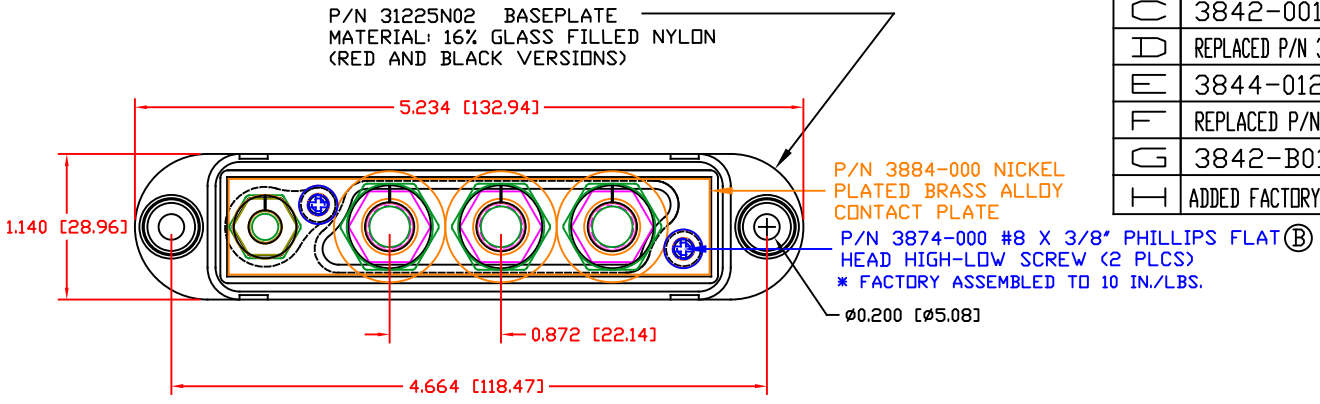


THE INFORMATION CONTAINED IN THIS DRAWING IS THE SOLE PROPERTY OF VTE INCORPORATED. ANY REPRODUCTION IN PART OR WHOLE WITHOUT THE WRITTEN PERMISSION OF VTE INCORPORATED IS PROHIBITED. VTE MAKES NO WARRANTY, EXPRESSED OR IMPLIED, AS TO THE SUITABILITY OF A PRODUCT FOR ANY INTENDED USE. THE CUSTOMER SHALL BEAR THE SOLE RESPONSIBILITY OF DETERMINING THE SUITABILITY OF ANY VTE PRODUCT FOR ITS END USE.


LTR.	REVISIONS	DATE	INT.
A	3844-003 WAS 3844	06-16-06	BRH
B	3874-000 WAS 3873-000	07-12-06	BRH
C	3842-001 WAS 3842-002	08-14-06	BRH
D	REPLACED P/N 3842-002 WITH P/N 3842-005	03-28-06	RAS
E	3844-012 WAS 3844-003	11-01-16	JMM
F	REPLACED P/N 3736-005 WITH 3736-002	2-14-17	RAS
G	3842-B01 WAS 3842-001	06-14-17	JMM
H	ADDED FACTORY TORQUE SPEC TO 3874-000	5-23-24	RAS



TOLERANCE UNLESS OTHERWISE SPECIFIED:
 MOLDED PRODUCTS ONLY: ±0.30"/±0.8mm
 HARDWARE ITEMS: ±0.010"/±0.25mm
 RADIAL DIAMETERS TO BE MEASURED OVER MANDRELS,
 RING GAGES OR PIN GAGES OF SUITABLE SIZE

MATERIAL PART NO: 7111210502
 MATERIAL: GLASS FILLED NYLON
 VENDOR PART NO: NYLON N2015 HL NAT
 SPECIFIC GRAVITY: 1.23
 MELTING TEMP: 515 F [268 C]
 U.L. RATING: UL 94 HB

INCLUDES P-16808110001 BLUE DOT MULTI LABEL, 1 PER CONTAINER
 MAXIMUM AMPERAGE: 210 AMPS @12VDC
 RECOMMENDED MAX FASTENER TORQUE: 3/8"-16 - 180 IN./LBS.
 1/4"-20 - 60 IN./LBS.
 (ANTI-SEIZE RECOMMENDED)



VTE Incorporated
 5437 Robinson Road, P.O. Box 790
 Pellston, Michigan 49769
 Telephone: 1-800-527-9256, 231-539-8000
 FAX: 231-539-0914

REF:	DATE:	DRN BY:	BRH	WEIGHT:
CUSTOMER DIMS	01-20-06	CHK'D BY:	BRH	
TITLE:			3/8" 4- POINT CONTACT PLATE	
MATERIAL:		PART NO.		
GLASS FILLED NYLON		7704N0N02		
COLOR:	DRG CLASS	REV H		
RED				