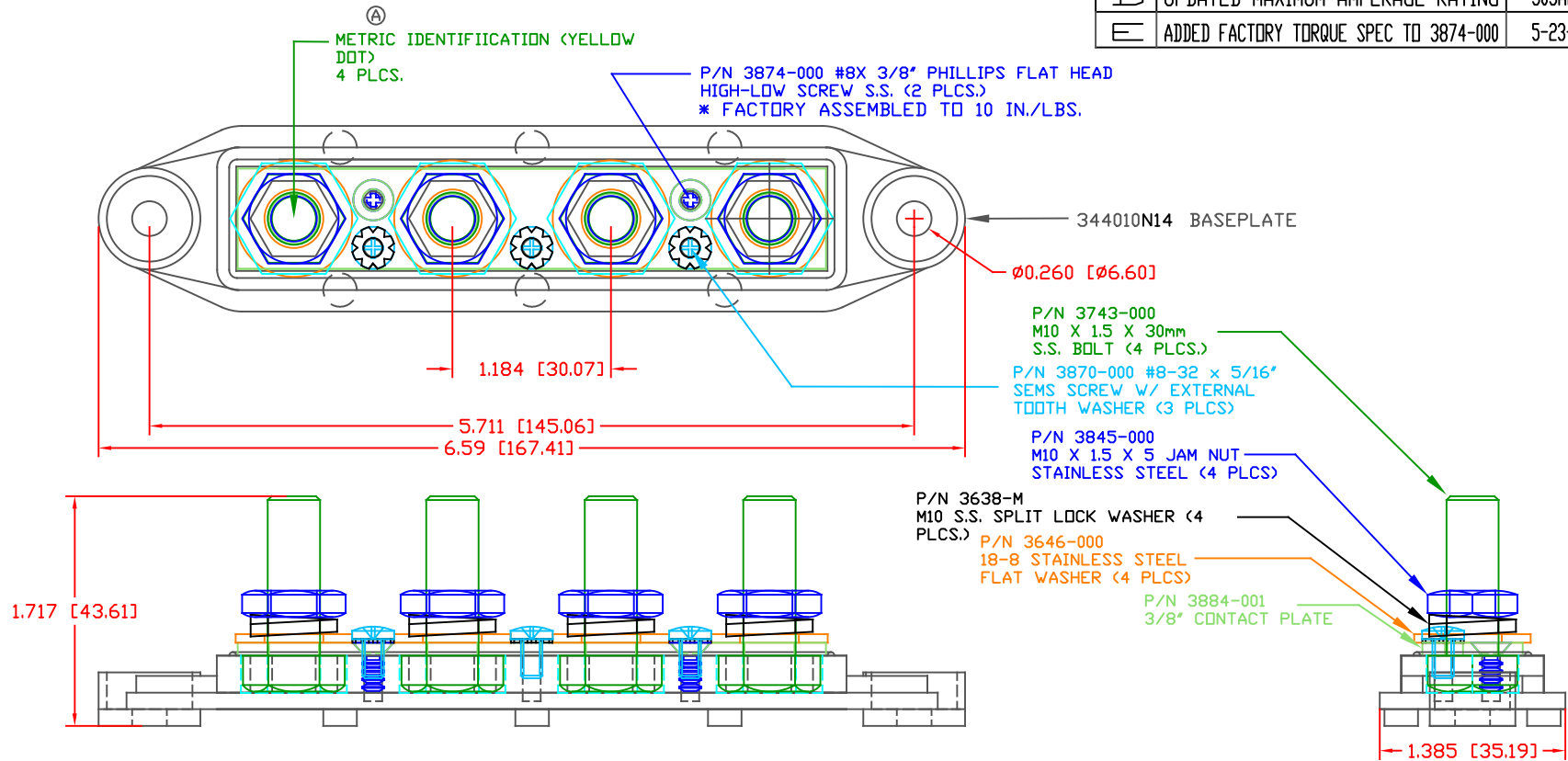


THE INFORMATION CONTAINED IN THIS DRAWING IS THE SOLE PROPERTY OF VTE INCORPORATED. ANY REPRODUCTION IN PART OR WHOLE WITHOUT THE WRITTEN PERMISSION OF VTE INCORPORATED IS PROHIBITED. VTE MAKES NO WARRANTY, EXPRESSED OR IMPLIED, AS TO THE SUITABILITY OF A PRODUCT FOR ANY INTENDED USE. THE CUSTOMER SHALL BEAR THE SOLE RESPONSIBILITY OF DETERMINING THE SUITABILITY OF ANY VTE PRODUCT FOR ITS END USE.

LTR.	REVISIONS	DATE	INT.
A	ADDED METRIC IDENTIFICATION METHOD	04-05-11	BRH
B	REMOVED (BLUE DOT) NOTE	10-20-15	RAS
C	UPDATED CURRENT RATING	06-02-15	RAS
D	UPDATED MAXIMUM AMPERAGE RATING	30JAN17	RAS
E	ADDED FACTORY TORQUE SPEC TO 3874-000	5-23-24	RAS




SCALE FACTOR : NONE
 ALL DIMENSIONS GIVEN AS: In [mm]
 TOLERANCES UNLESS OTHERWISE SPECIFIED :
 MOLDED PARTS: ±0.030" [±0.8mm]
 HARDWARE ITEMS: ±0.010" [±0.25mm]

MATERIAL PART NO:
 MATERIAL:
 VENDOR PART NO:
 SPECIFIC GRAVITY:
 MELTING TEMP:
 U.L. RATING:

111210514UL
 GLASS FILLED NYLON
 NYLON N2015 HL BK
 1.23
 515 F [268 C]
 UL 94 HB

MAXIMUM RECOMMENDED FASTENER TORQUE: (180 IN./LBS.) [20.3 Nm]
 (ANTI-SEIZE RECOMMENDED)

MAXIMUM RECOMMENDED AMPERAGE: 250 AMPS @ 12VDC

		VTE Incorporated 5437 Robinson Road, P.O. Box 790 Pellston, Michigan 49769 Telephone: 1-800-527-9256, 231-539-8000 FAX: 231-539-0914			
		REF:	DATE:	DRN BY:	BRH
CUSTOMER DIMS	06-03-10	CHK'D BY:	BRH		
TITLE: BUSBAR, 4 POINT, M10				SCALE:	
MATERIAL: GLASS FILLED NYLON			PART NO.		
COLOR: BLACK	DRG CLASS	REV E		74010N0N14	