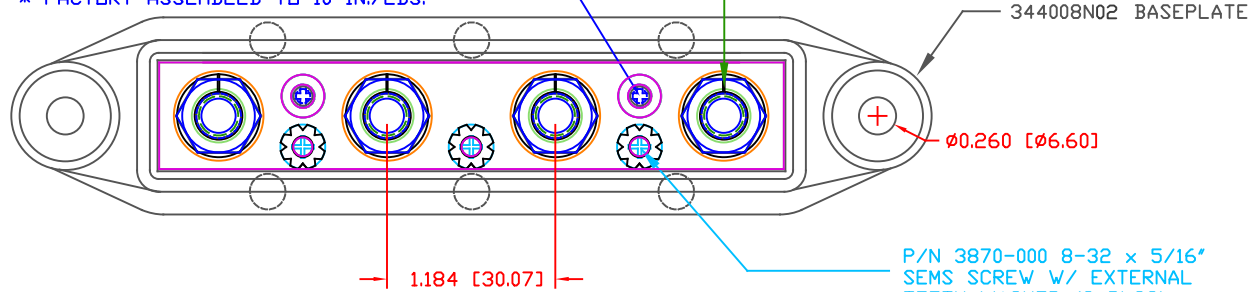


THE INFORMATION CONTAINED IN THIS DRAWING IS THE SOLE PROPERTY OF VTE INCORPORATED. ANY REPRODUCTION IN PART OR WHOLE WITHOUT THE WRITTEN PERMISSION OF VTE INCORPORATED IS PROHIBITED. VTE MAKES NO WARRANTY, EXPRESSED OR IMPLIED, AS TO THE SUITABILITY OF A PRODUCT FOR ANY INTENDED USE. THE CUSTOMER SHALL BEAR THE SOLE RESPONSIBILITY OF DETERMINING THE SUITABILITY OF ANY VTE PRODUCT FOR ITS END USE.

LTR.	REVISIONS	DATE	INT.
A	ADDED METRIC IDENTIFICATION METHOD	05APR11	BRH
B	REMOVED BLUE DOT INSTRUCTION	21OCT15	RAS
C	UPDATED DIMENSIONS AND DESCRIPTIONS	02FEB16	RAS
D	UPDATED CURRENT RATING	02JUN16	RAS
E	UPDATED MAXIMUM AMPERAGE RATING	30JAN17	RAS
F	ADDED FACTORY TORQUE SPEC TO 3874-000	5-23-24	RAS

P/N 3874-000 PHILLIPS FLAT HEAD 8-32 x 3/8" HIGH-LOW SCREW STAINLESS STEEL (2 PLCS.)
* FACTORY ASSEMBLED TO 10 IN./LBS.

METRIC IDENTIFICATION (YELLOW DOT) 4 PLCS.



P/N 3870-000 8-32 x 5/16" SEMS SCREW W/ EXTERNAL TOOTH WASHER (3 PLCS.)

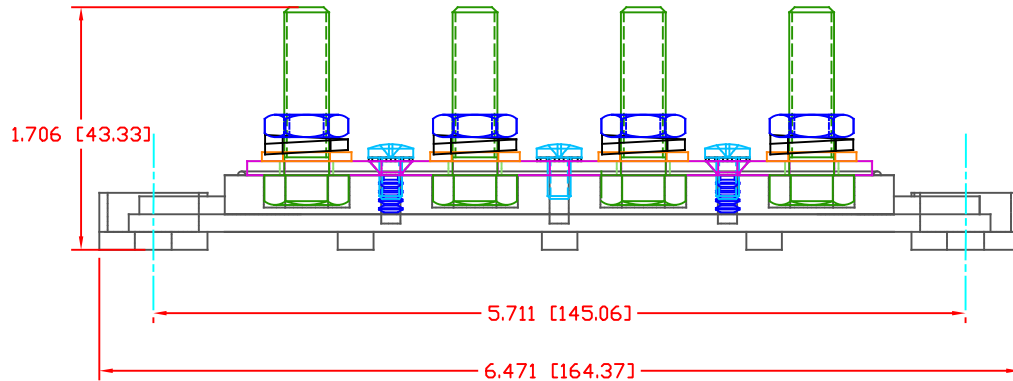
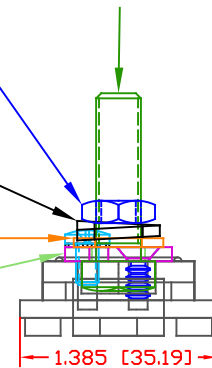
P/N 3731-001 M8 x 1.25 x 30 FULLY THREADED STAINLESS STEEL BOLT (4 PLCS.)

P/N 3846-000 M8 x 1.25 HEAVY JAM NUT 18-8 STAINLESS STEEL (4 PLCS.)

P/N 3638-002 18-8 STAINLESS STEEL SPRING WASHER (4 PLCS.)

P/N 3643-001 18-8 STAINLESS STEEL FLAT WASHER (4 PLCS.)

P/N 3885-001 5/16" CONNECTION PLATE




SCALE FACTOR : NONE
ALL DIMENSIONS GIVEN AS: in [mm]
TOLERANCES UNLESS OTHERWISE SPECIFIED :
MOLDED PARTS: ±.030" [±0.8mm]
HARDWARE ITEMS: ±.010" [±0.25mm]

MATERIAL PART NO:
MATERIAL:
VENDOR PART NO:
SPECIFIC GRAVITY:
MELTING TEMP:
U.L. RATING:

7111210502
GLASS FILLED NYLON
NYLON N2015 HL NAT
1.23
515 F [268 C]
UL 94 HB

MAXIMUM RECOMMENDED FASTENER TORQUE: (144 IN./LBS.) [16.2 Nm]
(ANTI-SEIZE RECOMMENDED)

MAXIMUM RECOMMENDED AMPERAGE: 250 AMPS @ 12VDC



VTE Incorporated
5437 Robinson Road, P.O. Box 790
Pellston, Michigan 49769
Telephone: 1-800-527-9256, 231-539-8000
FAX: 231-539-0914

REF:	DATE:	DRN BY:	BRH	WEIGHT:
CUSTOMER DIMS	06-03-10	CHK'D BY:	BRH	
TITLE:			SCALE: NONE	
MATERIAL: GLASS-FILLED NYLON		PART NO.		
COLOR: RED		74008N0N02		
DRG CLASS		REV F		