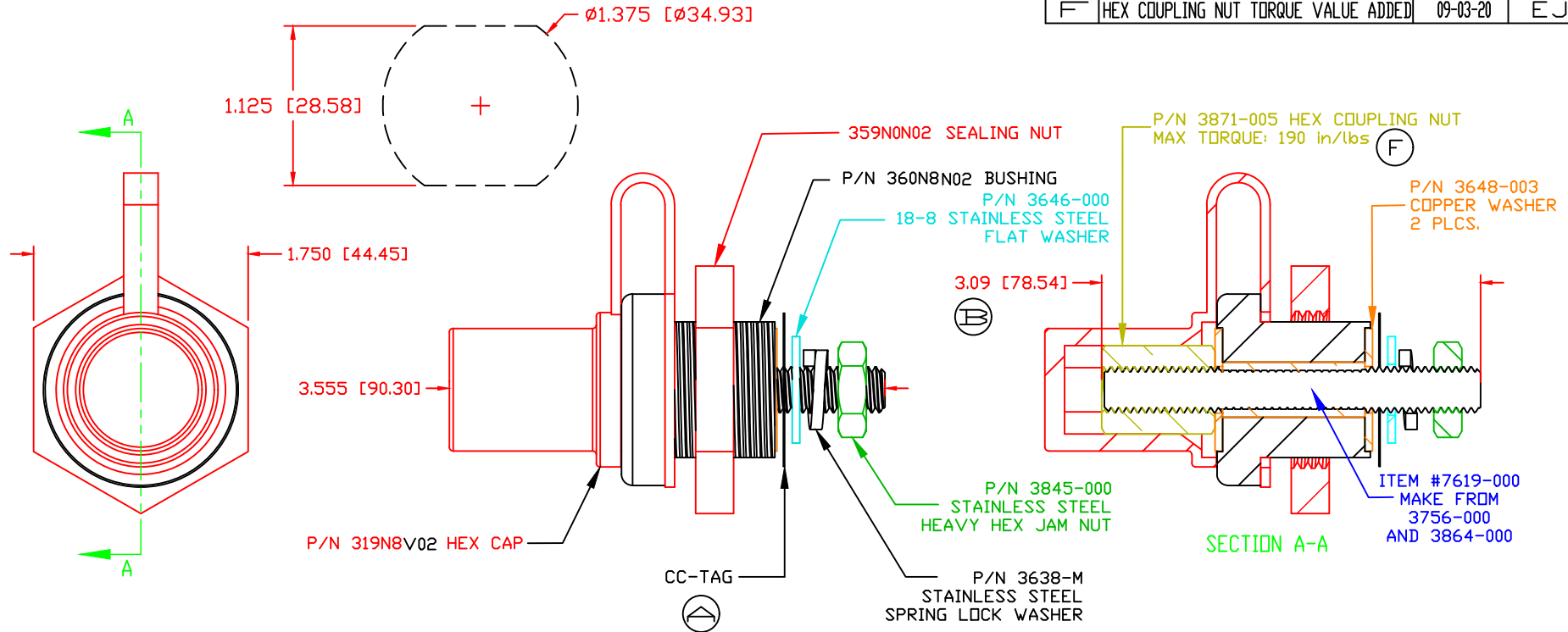


THE INFORMATION CONTAINED IN THIS DRAWING IS THE SOLE PROPERTY OF VTE INCORPORATED. ANY REPRODUCTION IN PART OR WHOLE WITHOUT THE WRITTEN PERMISSION OF VTE INCORPORATED IS PROHIBITED. VTE MAKES NO WARRANTY, EXPRESSED OR IMPLIED, AS TO THE SUITABILITY OF A PRODUCT FOR ANY INTENDED USE. THE CUSTOMER SHALL BEAR THE SOLE RESPONSIBILITY OF DETERMINING THE SUITABILITY OF ANY VTE PRODUCT FOR ITS END USE.

LTR.	REVISIONS	DATE	INT.
A	ADDED TORQUE TAG	12-29-15	RAS
B	3.09 WAS 3.07	06-07-17	JMM
C	UPDATED MATERIAL PART #	6-14-17	RAS
D	UPDATED TORQUE VALUES FROM 180 IN-LBS [20.34 Nm]	2-03-18	RAS
E	REDRAWN AND UPDATED	12-20-18	RAS
F	HEX COUPLING NUT TORQUE VALUE ADDED	09-03-20	EJE

USE GREENLEE PUNCH  
ASSEMBLY #60098  
FOR PANEL CUTOUT



Ⓓ MAXIMUM FASTENER TORQUES:  
JAM NUTS: 212 IN-LBS [24.0 Nm]  
SEALING NUT: 120 IN-LBS [13.5 Nm]

Ⓒ  
7111210502  
GLASS FILLED NYLON  
HYLON N2015 HL NAT  
1.23  
515 F [268 C]  
UL 94 HB

MATERIAL PART NO:  
MATERIAL:  
VENDOR PART NO:  
SPECIFIC GRAVITY:  
MELTING TEMP:  
U.L. RATING:

CURRENT CARRYING CAPACITY: 350 AMPS @ 12VDC

SCALE FACTOR : NONE  
ALL DIMENSIONS GIVEN AS: in [mm]  
TOLERANCES UNLESS OTHERWISE SPECIFIED :  
MOLDED PARTS: ±.030" [±0.8mm]  
HARDWARE ITEMS: ±.010" [±0.25mm]



VTE Incorporated  
5437 Robinson Road, P.O. Box 790  
Pellston, Michigan 49769  
Telephone: 1-800-527-9256, 231-539-8000  
FAX: 231-539-0914

REF:	DATE:	DRN BY:	RAS	WEIGHT:
CUSTOMER DIMS	12-20-18	CHK'D BY:	PJK	
TITLE: M10 POWER BUSHING COPPER CORE JUMPER 350 AMP				
MATERIAL: GLASS FILLED NYLON			PART NO.	
COLOR: RED	DRG CLASS	REV F	CCJB376M0N02	