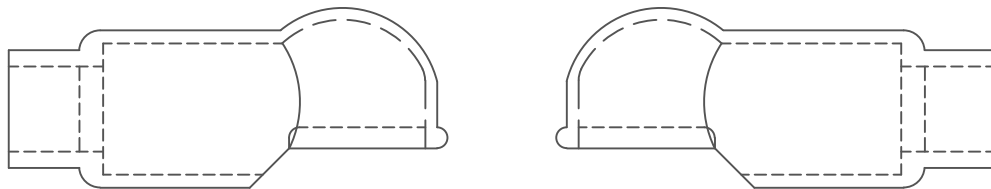
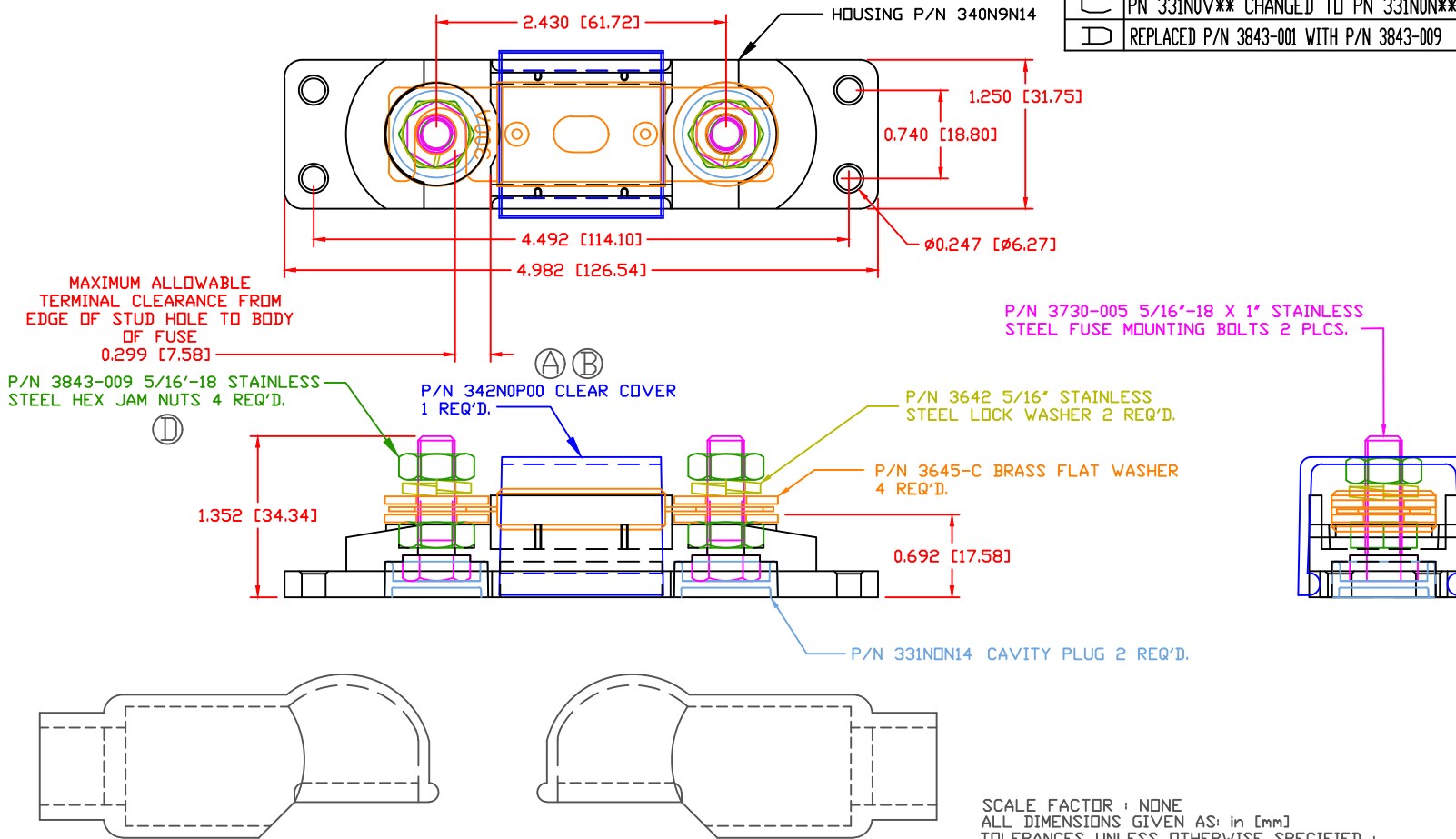


THE INFORMATION CONTAINED IN THIS DRAWING IS THE SOLE PROPERTY OF VTE INCORPORATED. ANY REPRODUCTION IN PART OR WHOLE WITHOUT THE WRITTEN PERMISSION OF VTE INCORPORATED IS PROHIBITED. VTE MAKES NO WARRANTY, EXPRESSED OR IMPLIED, AS TO THE SUITABILITY OF A PRODUCT FOR ANY INTENDED USE. THE CUSTOMER SHALL BEAR THE SOLE RESPONSIBILITY OF DETERMINING THE SUITABILITY OF ANY VTE PRODUCT FOR ITS END USE.

LTR.	REVISIONS	DATE	INT.
A	342NOV00 WAS 341NOV00	03-13-07	BRH
B	342NOP00 WAS 342NOV00	07-30-15	BRH
C	PN 331NOV** CHANGED TO PN 331NON**	08-05-16	MDL
D	REPLACED P/N 3843-001 WITH P/N 3843-009	01-16-17	RAS



FUSE NOT INCLUDED  
 ASSEMBLY INCLUDES:

2-487N8V14 INSULATORS

MATERIAL PART NO:  
 MATERIAL:  
 VENDOR PART NO:  
 SPECIFIC GRAVITY:  
 MELTING TEMP:  
 U.L. RATING:

111210514UL  
 GLASS FILLED NYLON  
 NYLON N2015 HL BK  
 1.23  
 515 F [268 C]  
 UL 94 HB

MAXIMUM RECOMMENDED AMPERAGE: 300 AMPS @ 12 VDC  
 MAXIMUM RECOMMENDED FASTENER TORQUE: 144 IN/LBS [16.2 Nm]

**VTE Incorporated**  
 5437 Robinson Road, P.O. Box 790  
 Pellston, Michigan 49769  
 Telephone: 1-800-527-9256, 231-539-8000  
 FAX: 231-539-0914

REF:	DATE: 11-10-04	DRN BY: BRH	WEIGHT: .36 Lb. / 163.6 G.
TITLE: ANL TYPE FUSE HOLDER			SCALE:
MATERIAL:		PART NO. ANB740N9N14	
COLOR: BLACK	DRG CLASS: REV D		