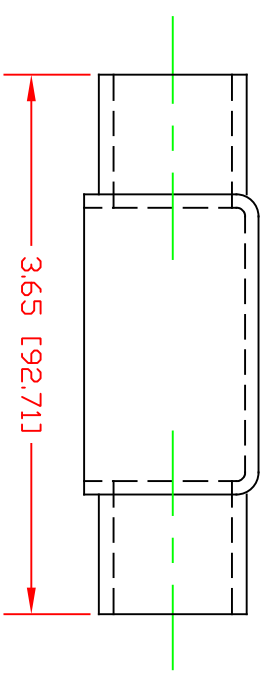
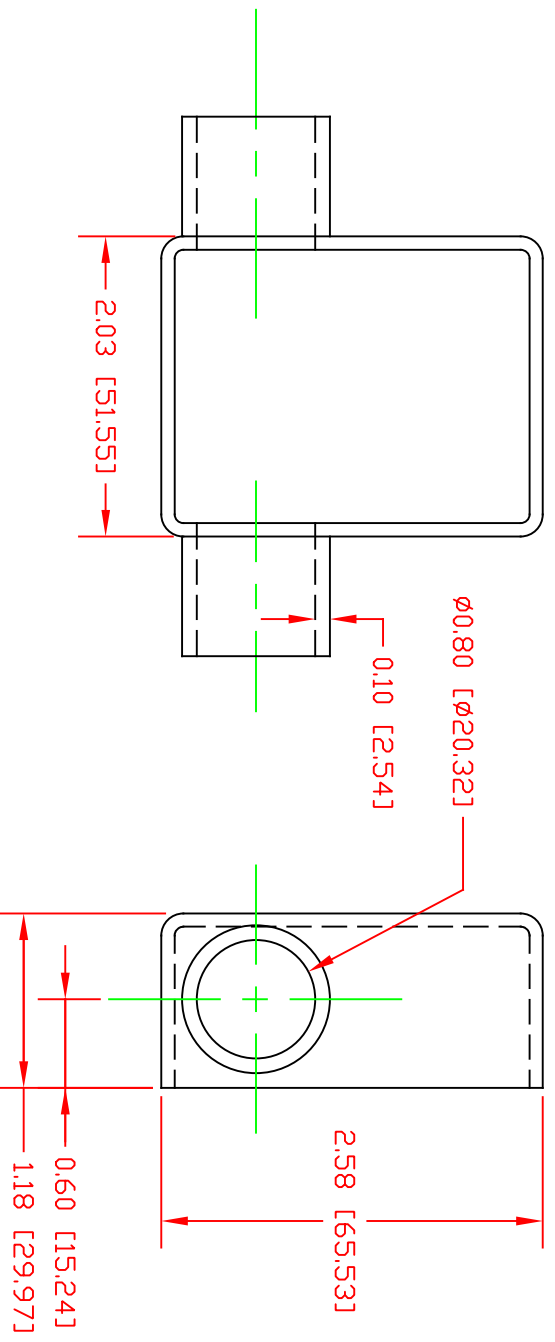



THE INFORMATION CONTAINED IN THIS DRAWING IS THE SOLE PROPERTY OF VTE INCORPORATED. ANY REPRODUCTION IN PART OR WHOLE WITHOUT THE WRITTEN PERMISSION OF VTE INCORPORATED IS PROHIBITED. VTE MAKES NO WARRANTY, EXPRESSED OR IMPLIED, AS TO THE SUITABILITY OF A PRODUCT FOR ANY INTENDED USE. THE CUSTOMER SHALL BEAR THE SOLE RESPONSIBILITY OF DETERMINING THE SUITABILITY OF ANY VTE PRODUCT FOR ITS END USE.

LTR	REVISIONS	DATE	INT.



SCALE FACTOR : NONE
 ALL DIMENSIONS GIVEN AS: in [mm]
 TOLERANCES UNLESS OTHERWISE SPECIFIED :
 MOLDED PARTS: ±0.30" [±0.8mm]
 ALL ANGLES ARE ± 1 DEGREE

VTE MATERIAL PART NO: 1101650102
 MATERIAL: RED PVC
 MATERIAL PART NO: 9812-65-RED683
 MAX. OPERATING TEMP: 105 C
 SHORE DUREMETER "A" 10 SEC. 67/62
 SPECIFIC GRAVITY: 1.34
 ULT. ELONGATION %: 475
 BRITTLE TEMP: -44 C
 TENSILE STRENGTH PSI: 1547
 U.L. RATING: 94 V2
 MEETS: FMVSS.302

		VTE Incorporated 5437 Robinson Road, P.O. Box 790 Pellston, Michigan 49769 Telephone: 1-800-527-9256, 231-539-8000 FAX: 231-539-0914			
		REF:	DATE:	DRN BY:	BRH
TITLE:	01-JUN-01	CHK'D BY:	BRH	.079 LBS. / 35.9 G	
MATERIAL:	BATTERY CABLE BOOT	PART NO:		SCALE:	
COLOR:	PVC	975D8V02			
	DRG CLASS				