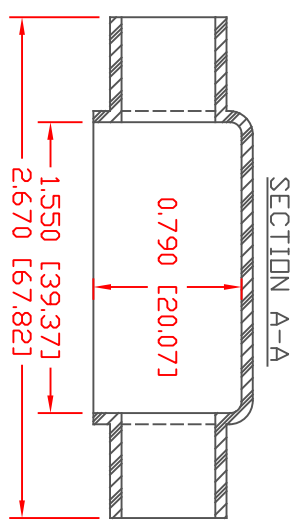
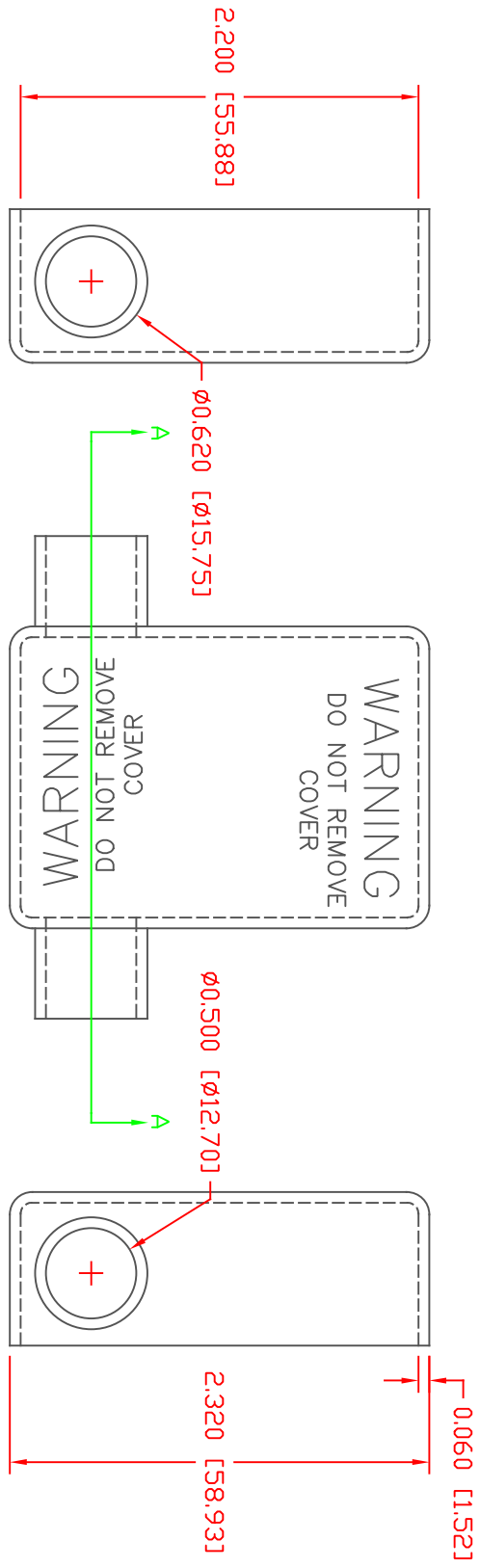


THE INFORMATION CONTAINED IN THIS DRAWING IS THE SOLE PROPERTY OF VTE INCORPORATED. ANY REPRODUCTION IN PART OR WHOLE WITHOUT THE WRITTEN PERMISSION OF VTE INCORPORATED IS PROHIBITED. VTE MAKES NO WARRANTY, EXPRESSED OR IMPLIED, AS TO THE SUITABILITY OF A PRODUCT FOR ANY INTENDED USE. THE CUSTOMER SHALL BEAR THE SOLE RESPONSIBILITY OF DETERMINING THE SUITABILITY OF ANY VTE PRODUCT FOR ITS END USE. PROPRIETARY RIGHTS ARE CLAIMED FOR THE MATERIAL DISCLOSED IN THIS DRAWING.

LTR	REVISIONS	DATE	INT.
☞	UPDATED MATERIAL INFORMATION	8-02-22	RAS

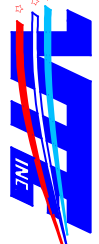


VTE PART NO:
 MATERIAL:
 VENDOR PART NO:
 SHORE DUREMETER:
 SPECIFIC GRAVITY:
 ULT. ELONGATION %:
 MELTING TEMP:
 BRITTLE TEMP:
 TENSILE STRENGTH PSI:
 DIELECTRIC STRENGTH, V./mil
 U.L. RATING:

1101650114
 PVC
 9812-65-BLACK
 "A" 10 SEC. 65
 1.34
 400
 315-335 F [157-168 C]
 -54 F [-48 C]
 1550 PSI
 453
 V2

DO NOT SCALE

ALL DIMENSIONS GIVEN AS: In [mm]
 MOLDED PARTS: ±.030" [±0.8mm]
 HARDWARE ITEMS: ±.010" [±0.25mm]



VTE Incorporated
 5437 Robinson Road, P.O. Box 790
 Pellston, Michigan 49769
 Telephone: 1-800-527-9256, 231-539-8000
 FAX: 231-539-0914

REF:	DATE:	DRN BY:	JC	WEIGHT:
	4-14-98	CHK'D BY:		.039 lbs. [17.8 g.]
TITLE:	BATTERY CABLE BOOT			
MATERIAL:	PVC	PART NO:	843D9V14	
COLOR:	BLUE	DRG CLASS:	REV A	