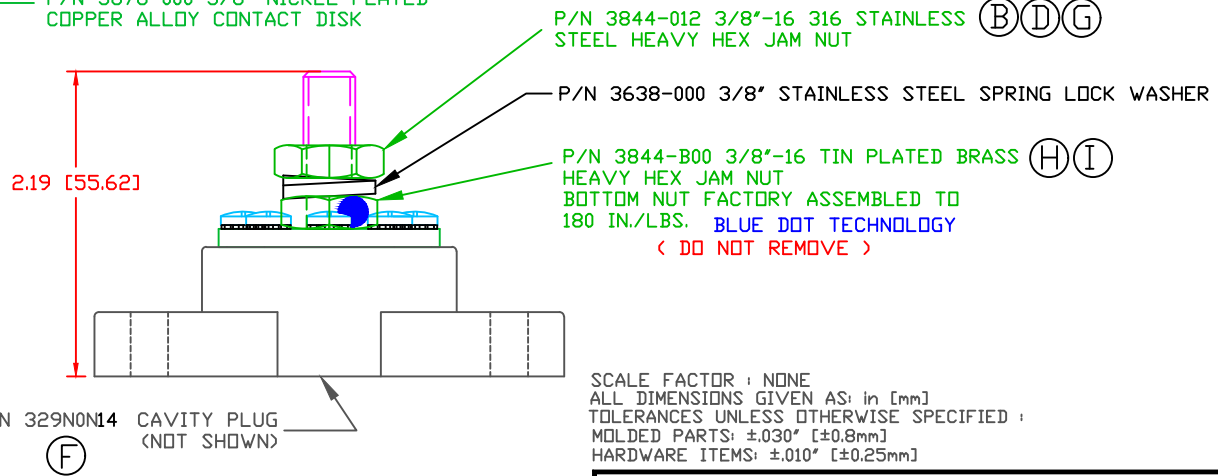
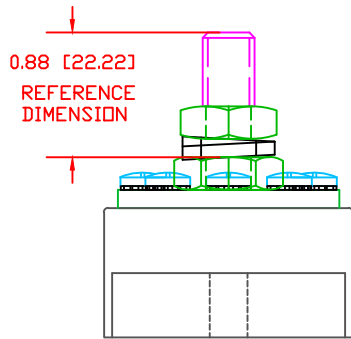
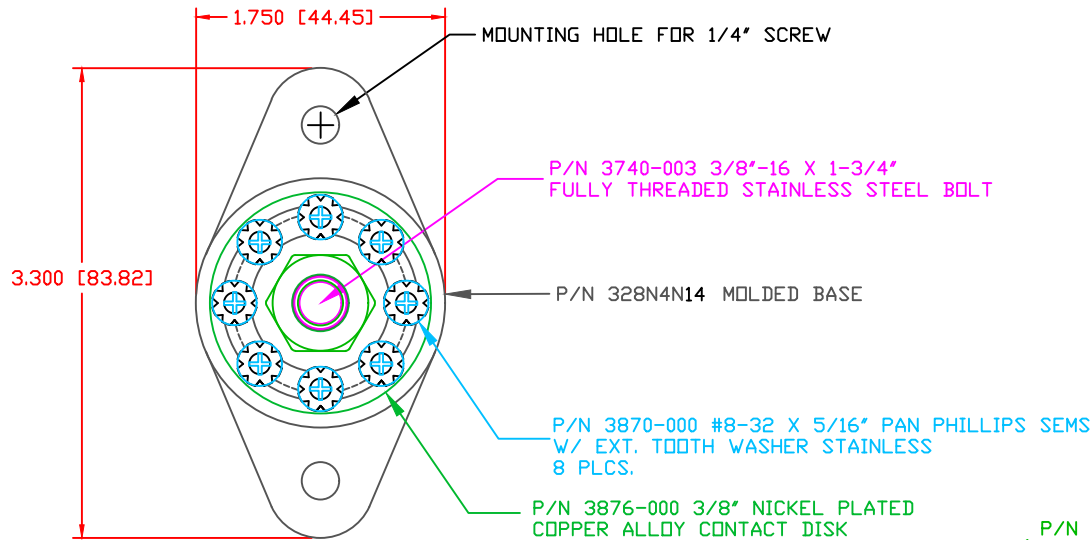


THE INFORMATION CONTAINED IN THIS DRAWING IS THE SOLE PROPERTY OF VTE INCORPORATED. ANY REPRODUCTION IN PART OR WHOLE WITHOUT THE WRITTEN PERMISSION OF VTE INCORPORATED IS PROHIBITED. VTE MAKES NO WARRANTY, EXPRESSED OR IMPLIED, AS TO THE SUITABILITY OF A PRODUCT FOR ANY INTENDED USE. THE CUSTOMER SHALL BEAR THE SOLE RESPONSIBILITY OF DETERMINING THE SUITABILITY OF ANY VTE PRODUCT FOR ITS END USE.

LTR.	REVISIONS	DATE	INT.
A	ADDED COMPONENT P/N SUFFIXES	04-04-06	BRH
B	3844-002 WAS 3844-000	10-10-06	BRH
C	ADDED SUB-ASSEMBLY P/N 73876	10-11-06	BRH
D	3844-003 WAS 3844-002	01-30-07	BRH
E	REMOVED SUB-ASSEMBLY NOTE P/N 73876	02-02-16	RAS
F	PN 329NOV** CHANGED TO 329NON**	06-27-16	MDL
G	3844-012 WAS 3844-003	11-01-16	JMM
H	3844-000 WAS 3844-002	11-16-16	JMM
I	3844-B00 WAS 3844-000	6-02-17	JMM



SCALE FACTOR : NONE  
 ALL DIMENSIONS GIVEN AS: in [mm]  
 TOLERANCES UNLESS OTHERWISE SPECIFIED :  
 MOLDED PARTS: ±0.30" [±0.8mm]  
 HARDWARE ITEMS: ±.010" [±0.25mm]

INCLUDES P-16808110001 BLUE DOT MULTI LABEL, 1 PER CONTAINER  
 RECOMMENDED MAXIMUM TORQUE: 3/8-16 NUT 144 IN./LBS.  
 #8 SCREWS 15 IN./LBS.  
 160A @ 12VDC (8 X 20 AMP CIRCUITS)  
 48 VOLTS DC MAX.

AMPERAGE RATING:  
 VOLTAGE RATING:

MATERIAL PART NO: 111210514UL  
 MATERIAL: GLASS FILLED NYLON  
 VENDOR PART NO: NYLON N2015 HL BK  
 SPECIFIC GRAVITY: 1.23  
 MELTING TEMP: 515 F [268 C]  
 U.L. RATING: UL 94 HB

VTE Incorporated  
 5437 Robinson Road, P.O. Box 790  
 Pellston, Michigan 49769  
 Telephone: 1-800-527-9256, 231-539-8000  
 FAX: 231-539-0914

REF:	DATE:	DRN BY:	BRH	WEIGHT:
CUSTOMER DIMS	04-09-03	CHK'D BY:	BRH	
TITLE:			3/8" POWER DISTRIBUTION POST	
SCALE:			NONE	
MATERIAL:		GLASS-FILLED NYLON		PART NO.
COLOR:		BLACK		77837N14
DRG CLASS		REV I		