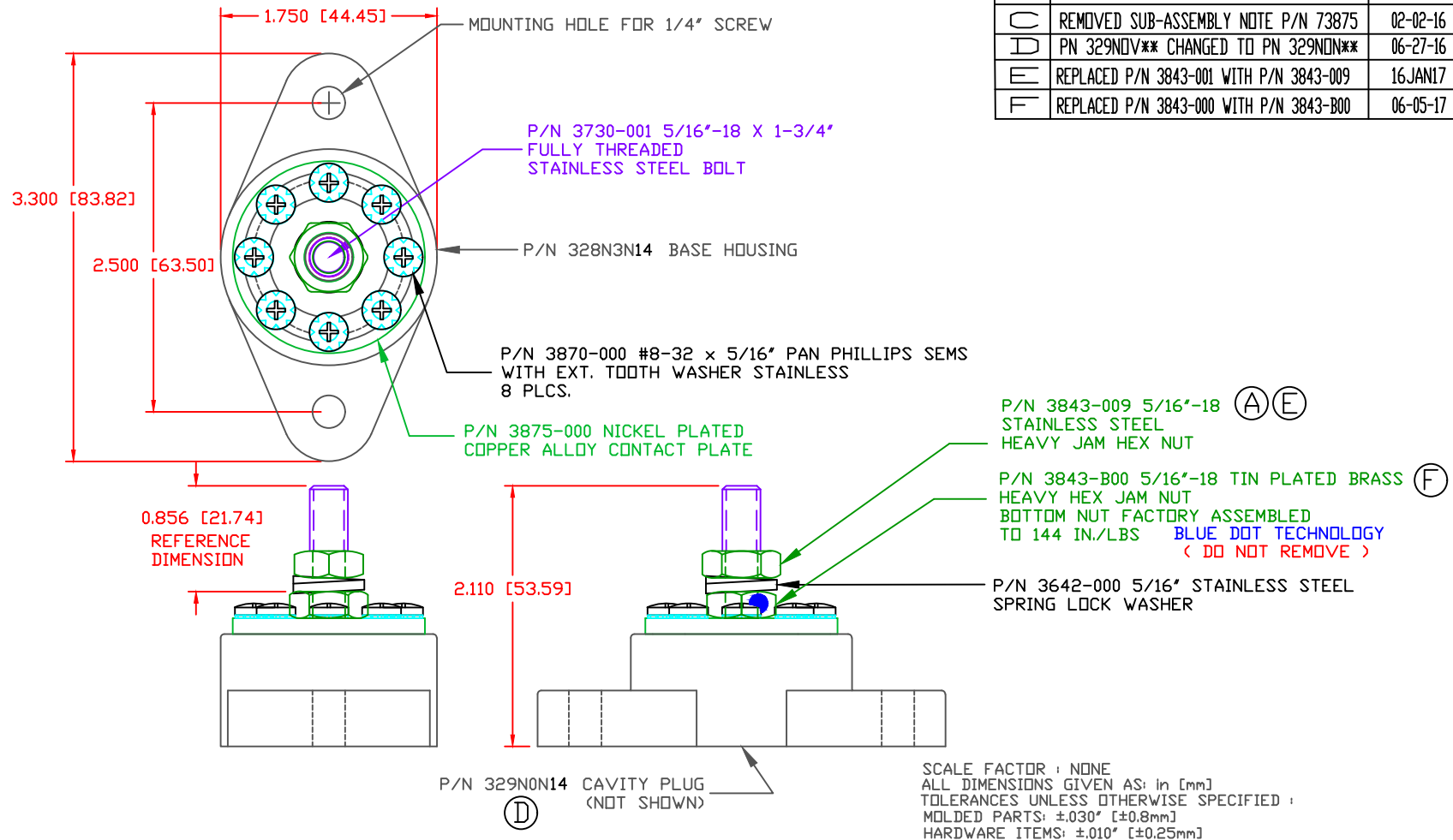


THE INFORMATION CONTAINED IN THIS DRAWING IS THE SOLE PROPERTY OF VTE INCORPORATED. ANY REPRODUCTION IN PART OR WHOLE WITHOUT THE WRITTEN PERMISSION OF VTE INCORPORATED IS PROHIBITED. VTE MAKES NO WARRANTY, EXPRESSED OR IMPLIED, AS TO THE SUITABILITY OF A PRODUCT FOR ANY INTENDED USE. THE CUSTOMER SHALL BEAR THE SOLE RESPONSIBILITY OF DETERMINING THE SUITABILITY OF ANY VTE PRODUCT FOR ITS END USE.

LTR.	REVISIONS	DATE	INT.
A	3843-001 WAS 3843-000	10-10-06	BRH
B	ADDED SUB-ASSEMBLY P/N 73875	10-11-06	BRH
C	REMOVED SUB-ASSEMBLY NOTE P/N 73875	02-02-16	RAS
D	PN 329NOV** CHANGED TO PN 329NON**	06-27-16	MDL
E	REPLACED P/N 3843-001 WITH P/N 3843-009	16 JAN 17	RAS
F	REPLACED P/N 3843-000 WITH P/N 3843-B00	06-05-17	JMM



INCLUDES P-16808110001 BLUE DOT MULTI LABEL, 1 PER CONTAINER
 RECOMMENDED MAXIMUM TORQUE: 5/16-18 NUT 120 IN./LBS.
 #8 SCREWS 15 IN./LBS.
 AMPERAGE RATING: 160A @ 12VDC (8 X 20 AMP CIRCUITS)
 VOLTAGE RATING: 48 VOLTS DC MAX.

MATERIAL PART NO: 111210514UL
 MATERIAL: GLASS FILLED NYLON
 VENDOR PART NO: HYLON N2015 HL BK
 SPECIFIC GRAVITY: 1.23
 MELTING TEMP: 515 F [268 C]
 U.L. RATING: UL 94 HB



VTE Incorporated
 5437 Robinson Road, P.O. Box 790
 Pellston, Michigan 49769
 Telephone: 1-800-527-9256, 231-539-8000
 FAX: 231-539-0914

REF:	DATE:	DRN BY:	BRH	WEIGHT:
CUSTOMER DIMS	04-09-03	CHK'D BY:	BRH	
TITLE:			SCALE:	
5/16" POWER DISTRIBUTION POST				
MATERIAL:		PART NO.		
COLOR:		77831N14		
DRG CLASS		REV F		