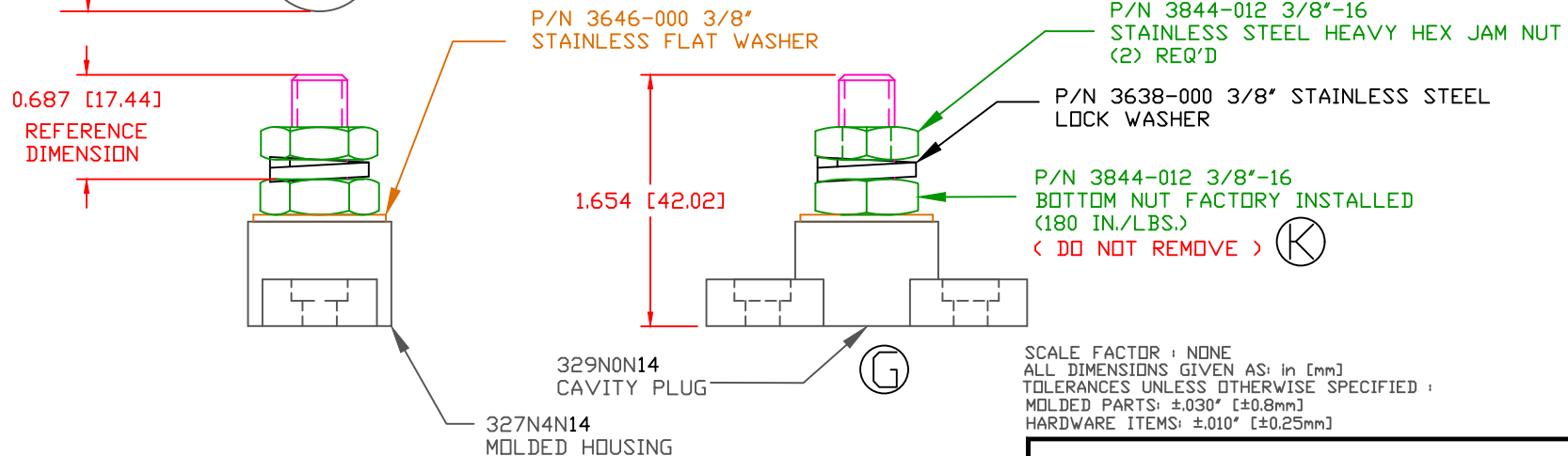
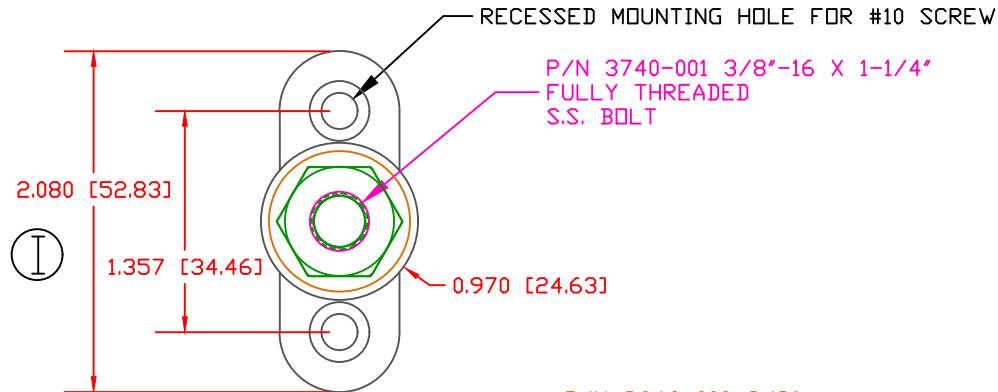


THE INFORMATION CONTAINED IN THIS DRAWING IS THE SOLE PROPERTY OF VTE INCORPORATED. ANY REPRODUCTION IN PART OR WHOLE WITHOUT THE WRITTEN PERMISSION OF VTE INCORPORATED IS PROHIBITED. VTE MAKES NO WARRANTY, EXPRESSED OR IMPLIED, AS TO THE SUITABILITY OF A PRODUCT FOR ANY INTENDED USE. THE CUSTOMER SHALL BEAR THE SOLE RESPONSIBILITY OF DETERMINING THE SUITABILITY OF ANY VTE PRODUCT FOR ITS END USE.

LTR.	REVISIONS	DATE	INT.
A	ADDED MATERIAL AND PERFORMANCE NOTES	1-22-04	BRH
B	REVISED PERFORMANCE NOTES	2-23-04	BRH
C	3844-002 WAS 3844	5-18-05	BRH
D	REPLACED (1)-3844-002 WITH (1)-3844	9-01-05	BRH
E	ADDED OPTIONAL CONSTRUCTION NOTE AND -000 SUFFIXES	4-04-06	BRH
F	REMOVED OPTIONAL CONSTRUCTION NOTE	10-08-15	RAS
G	PN 329NDV** CHANGED TO 329NON**	6-32-16	MDL
H	3844-012 WAS 3844-003	12-01-16	JMM
I	UPDATED AND ADDED DIMENSIONS FOR MOUNTING	7-31-17	RAS
J	REPLACED CURRENT LIMITS WITH TEMPERATURE LIMIT	10-12-18	RAS
K	UPDATED INTERNAL ASSEMBLY TORQUE FROM (144 IN./LBS.)	11-12-18	RAS




SCALE FACTOR : NONE
 ALL DIMENSIONS GIVEN AS: in [mm]
 TOLERANCES UNLESS OTHERWISE SPECIFIED :
 MOLDED PARTS: ±0.30" [±0.8mm]
 HARDWARE ITEMS: ±0.10" [±0.25mm]

MATERIAL PART NO: 111210514UL
 MATERIAL: GLASS FILLED NYLON
 VENDOR PART NO: HYLON N2015 HL BK
 SPECIFIC GRAVITY: 1.23
 MELTING TEMP: 515 F [268 C]
 U.L. RATING: UL 94 HB

OVERALL ASSEMBLY TEMPERATURE NOT TO EXCEED 140 DEGREES F
 (60 DEGREES C)

RECOMMENDED MAXIMUM TORQUE: 12 FT./LBS. (144 IN./LBS.)



VTE Incorporated
 5437 Robinson Road, P.O. Box 790
 Pellston, Michigan 49769
 Telephone: 1-800-527-9256, 231-539-8000
 FAX: 231-539-0914

REF:	DATE: 4-09-03	DRN BY: BRH	WEIGHT:
		CHK'D BY: BRH	
TITLE: 3/8" SMALL JUNCTION POST			SCALE: NONE
MATERIAL:		PART NO. 77037N14	
COLOR: BLACK	DRG CLASS	REV K	