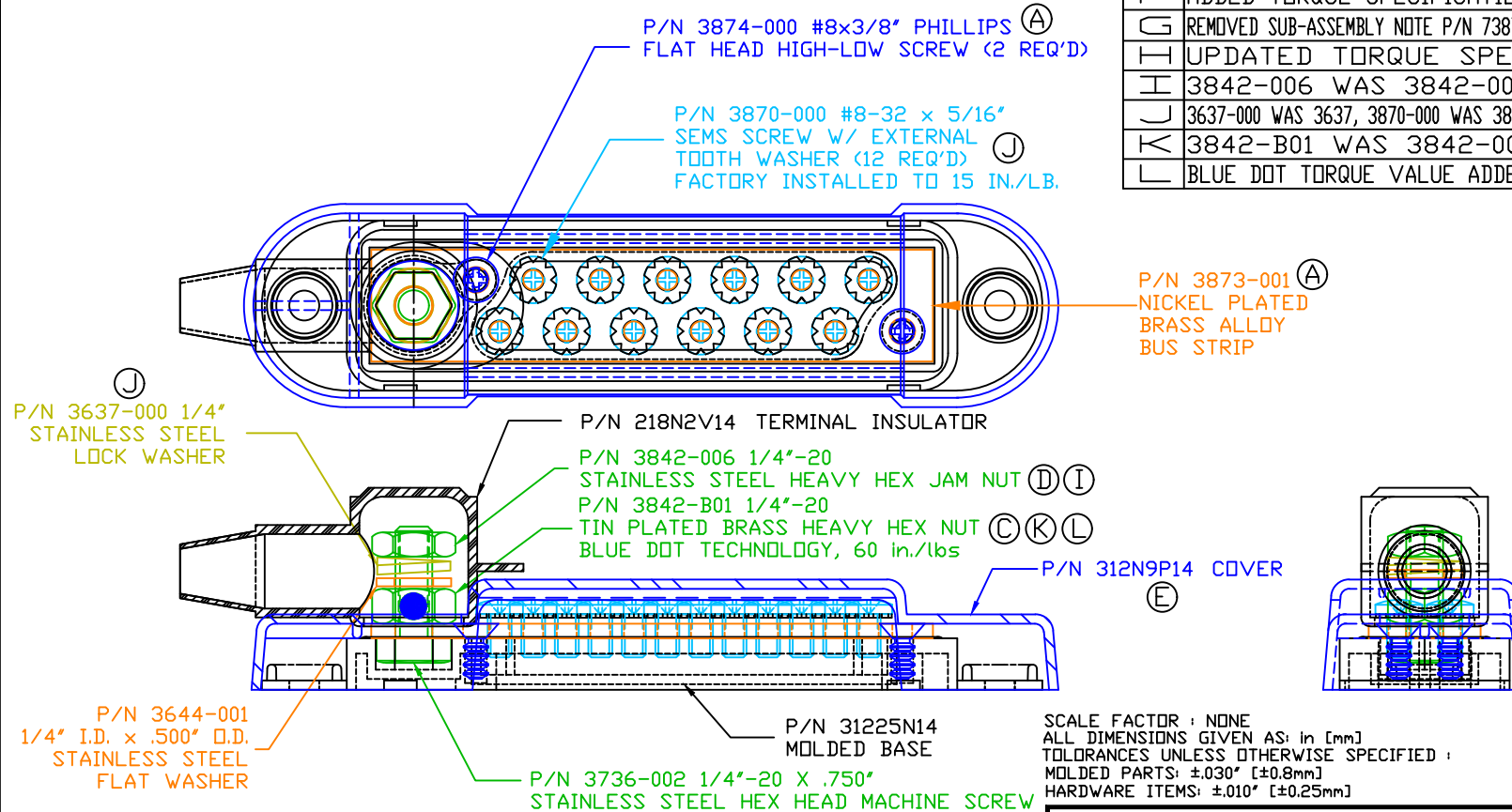


THE INFORMATION CONTAINED IN THIS DRAWING IS THE SOLE PROPERTY OF VTE INCORPORATED. ANY REPRODUCTION IN PART OR WHOLE WITHOUT THE WRITTEN PERMISSION OF VTE INCORPORATED IS PROHIBITED. VTE MAKES NO WARRANTY, EXPRESSED OR IMPLIED, AS TO THE SUITABILITY OF A PRODUCT FOR ANY INTENDED USE. THE CUSTOMER SHALL BEAR THE SOLE RESPONSIBILITY OF DETERMINING THE SUITABILITY OF ANY VTE PRODUCT FOR ITS END USE.


| LTR. | REVISIONS                                     | DATE     | INT. |
|------|---|----------|------|
| A    | 3874-000 WAS 3872, 3873-001 WAS 3873          | 10-03-16 | BRH  |
| B    | ADDED SUB ASSEMBLY P/N 73873-001              | 10-11-06 | BRH  |
| C    | 3842-001 ADDED 1 PLC, 3842-002 REMOVED 1 PLC. | 04-20-07 | BRH  |
| D    | 3842-003 WAS 3842-002                         | 08-22-07 | BRH  |
| E    | COVER 312N9P14 WAS 313NOV00                   | 10-02-08 | BRH  |
| F    | ADDED TORQUE SPECIFICATION                    | 01-21-14 | BRH  |
| G    | REMOVED SUB-ASSEMBLY NOTE P/N 73873           | 02-04-16 | RAS  |
| H    | UPDATED TORQUE SPEC                           | 08-09-16 | MDL  |
| I    | 3842-006 WAS 3842-003                         | 03-24-17 | JMM  |
| J    | 3637-000 WAS 3637, 3870-000 WAS 3870          | 03-30-17 | JMM  |
| K    | 3842-B01 WAS 3842-001                         | 06-14-17 | JMM  |
| L    | BLUE DOT TORQUE VALUE ADDED                   | 09-03-20 | EJE  |



MATERIAL PART NO:  
MATERIAL:  
VENDOR PART NO:  
SPECIFIC GRAVITY:  
MELTING TEMP:  
U.L. RATING:

1111210514UL  
GLASS FILLED NYLON  
NYLON N2015 HL BK  
1.23  
515 F [268 C]  
UL 94 HB

INCLUDES P-16808110001 BLUE DOT MULTI LABEL, 1 PER CONTAINER  
TESTED AT 240 AMPS @ 12VDC FOR 30 MINUTES, MAXIMUM  
TEMPERATURE RISE WAS 7.8 DEG. C. MAXIMUM  
TEMPERATURE RECORDED WAS 30.6 DEG. C.



VTE Incorporated  
5437 Robinson Road, P.O. Box 790  
Pellston, Michigan 49769  
Telephone: 1-800-527-9256, 231-539-8000  
FAX: 231-539-0914

|                              |           |           |          |         |
|------------------------------|-----------|-----------|----------|---------|
| REF:                         | DATE:     | DRN BY:   | BRH      | WEIGHT: |
| CUSTOMER DIMS                | 08-22-05  | CHK'D BY: | BRH      |         |
| TITLE:                       |           |           | SCALE:   |         |
| MATERIAL: GLASS-FILLED NYLON |           |           | PART NO. |         |
| COLOR: BLACK                 | DRG CLASS | REV L     | 71225N14 |         |