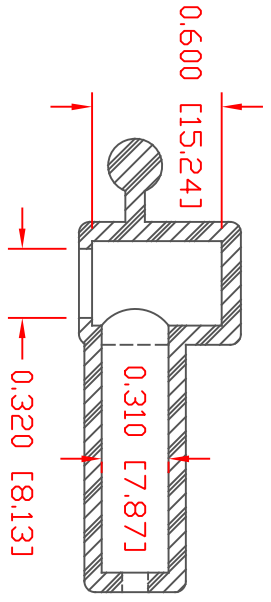
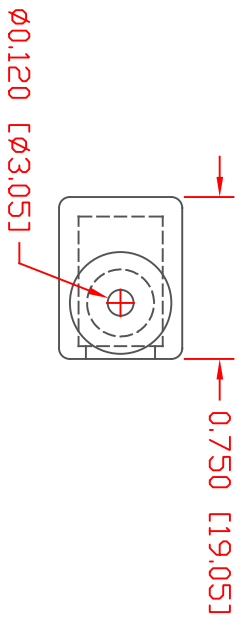
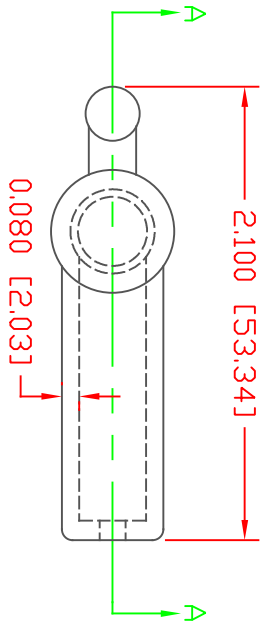


PROPRIETARY RIGHTS ARE CLAIMED FOR THE MATERIAL DISCLOSED IN THIS DRAWING.

TYP. WALL THICKNESS = 2.3

ITR	REVISIONS	DATE
≠	*****	00-00-98

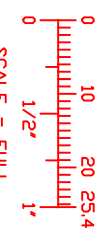


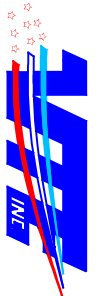
SECTION A-A

TOLERANCE UNLESS OTHERWISE SPECIFIED:  $\pm 0.30 / \pm 0.8 \text{mm}$   
 RADIAL DIAMETERS TO BE MEASURED OVER MANDRELS,  
 RING GAGES OR PIN GAGES OF SUITABLE SIZE

VTE Material Part No:  
 Material:  
 Material Part No:  
 Max. Operating Temp:  
 Shore Durometer  
 Specific Gravity:  
 Ult. Elongation %:  
 Brittle Temp:  
 Tensile Strength PSI:

1101650114  
 BLACK PVC  
 9812-65  
 105 C  
 "A" 10 SEC. 67/63  
 1.33  
 520  
 -36 C  
 1563 PSI



		<b>VTE Incorporated</b> 5437 Robinson Road, P.O. Box 790 Pellston, Michigan 49769 Telephone: 1-800-527-9256, 231-539-8000 FAX: 231-539-0914	
REF:	DATE:	DRN BY:	WEIGHT:
	4-8-98	JC	.01 LBS. / 4.98 G.
TITLE: EYELET TERMINAL INSULATOR		CHK'D BY:	
MATERIAL:		PART NO.	
COLDR:	DRG CLASS	620N4V14	