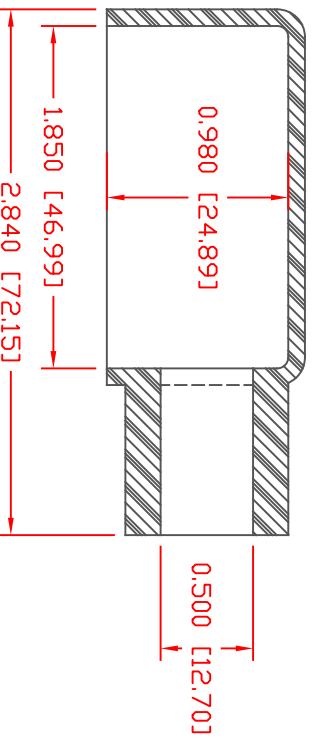
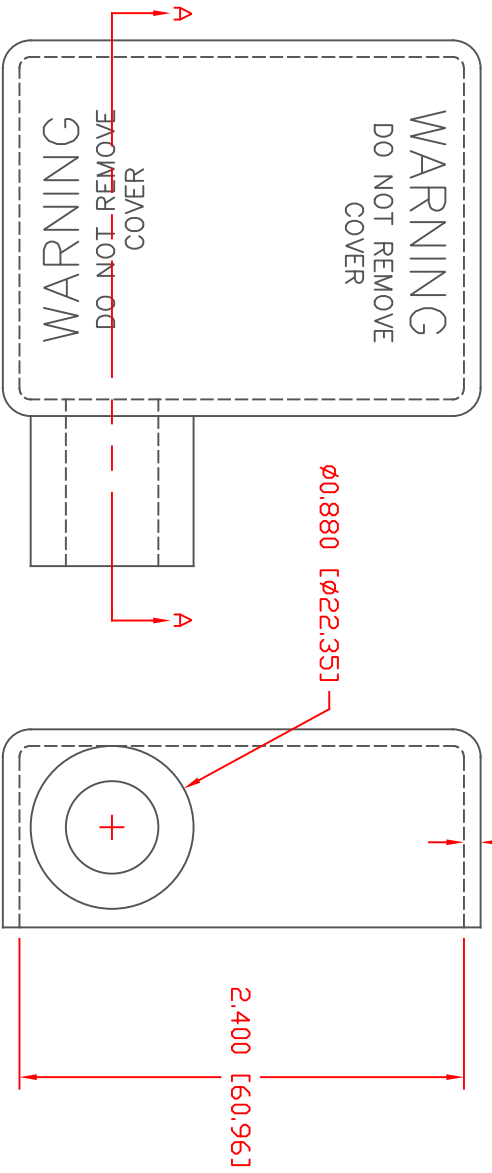


PROPRIETARY RIGHTS ARE CLAIMED FOR THE MATERIAL DISCLOSED IN THIS DRAWING.



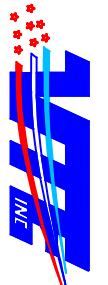
SECTION A-A

VTE Material Part No: 1101650102
 Material: RED PVC
 Material Part No: 9812-65-RED683
 Max. Operating Temp: 105 C
 Shore Durometer: "A" 10 SEC. 67/62
 Specific Gravity: 1.34
 Ult. Elongation %: 475
 Brittle Temp: -44 C
 Tensile Strength PSI: 1547 PSI

U.L. Rating: 94 V2
 MEETS: FMVSS.302

| LTR | REVISIONS | DATE | INT. |
|-----|-----------------------|---------|------|
| ☞ | UPDATED MATERIAL INFO | 8-04-17 | RAS |

TYP. WALL THICKNESS = 2.3
 TOLERANCE UNLESS OTHERWISE SPECIFIED: ±0.30/±0.8mm
 RADIAL DIAMETERS TO BE MEASURED OVER MANDRELS,
 RING GAGES OR PIN GAGES OF SUITABLE SIZE



VTE Incorporated
 5437 Robinson Road, P.O. Box 790
 Pellston, Michigan 49769
 Telephone: 1-800-527-9256, 231-539-8000
 FAX: 231-539-0914

| | | | | |
|-----------|--------------------|-----------|------------|-------------------|
| REF: | DATE: | DRN BY: | JC | WEIGHT: |
| | 4-6-98 | CHK'D BY: | | 078 LBS. / 35.5 G |
| TITLE: | BATTERY CABLE BOOT | | | |
| MATERIAL: | PVC | PART NO. | RIGHT HAND | |
| COLOR: | RED | DRG CLASS | 500R7 V02 | |